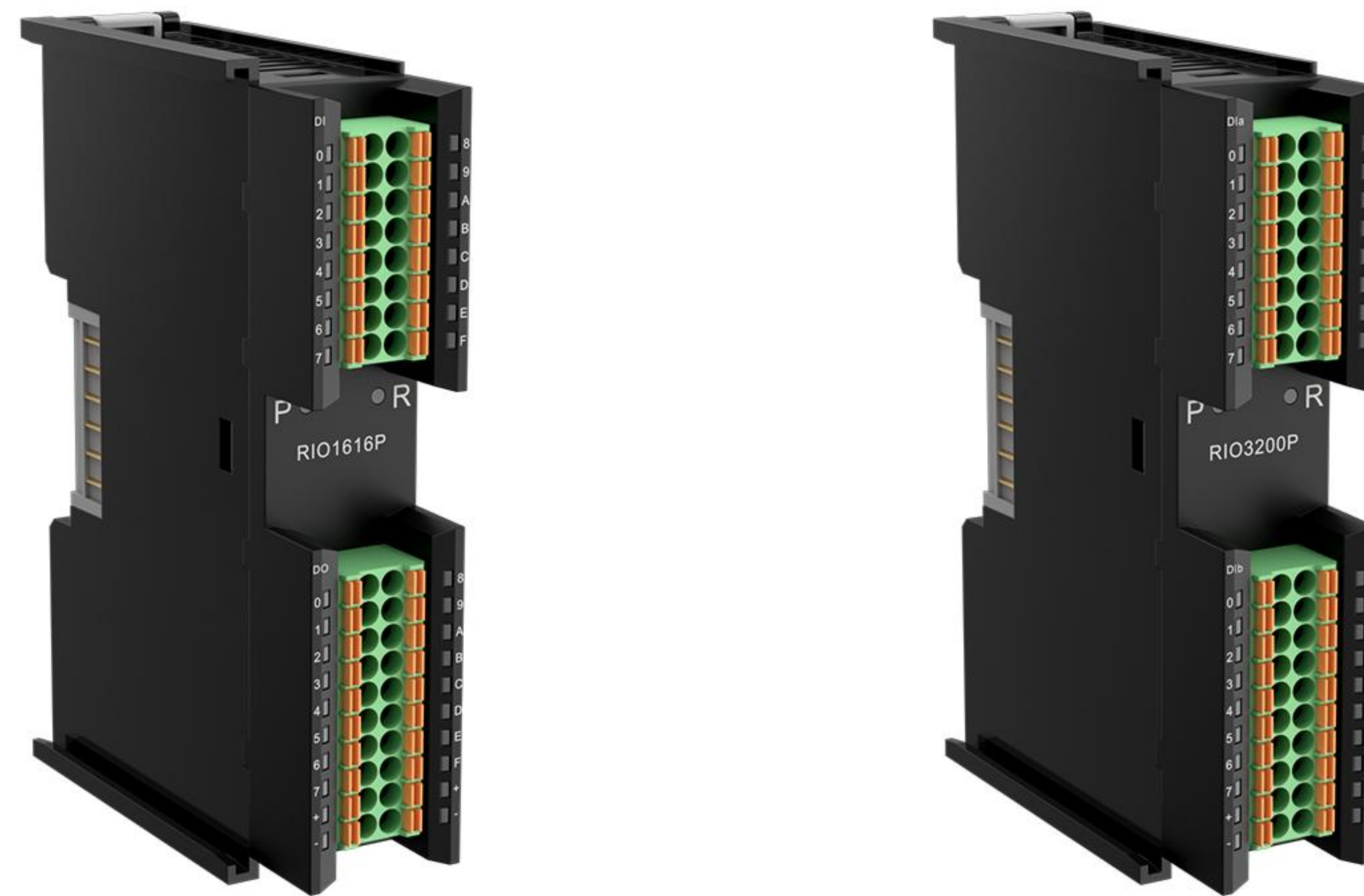
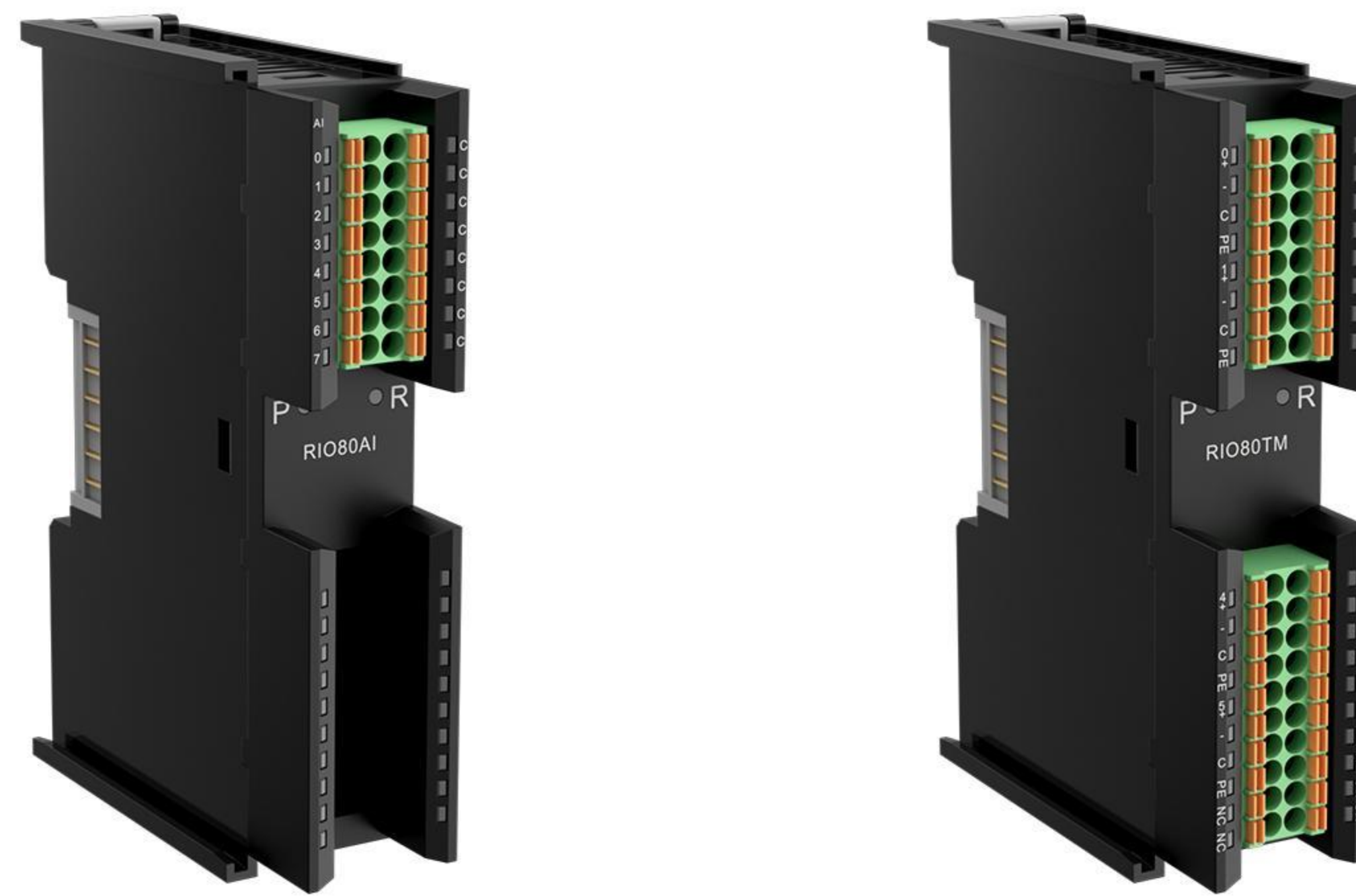




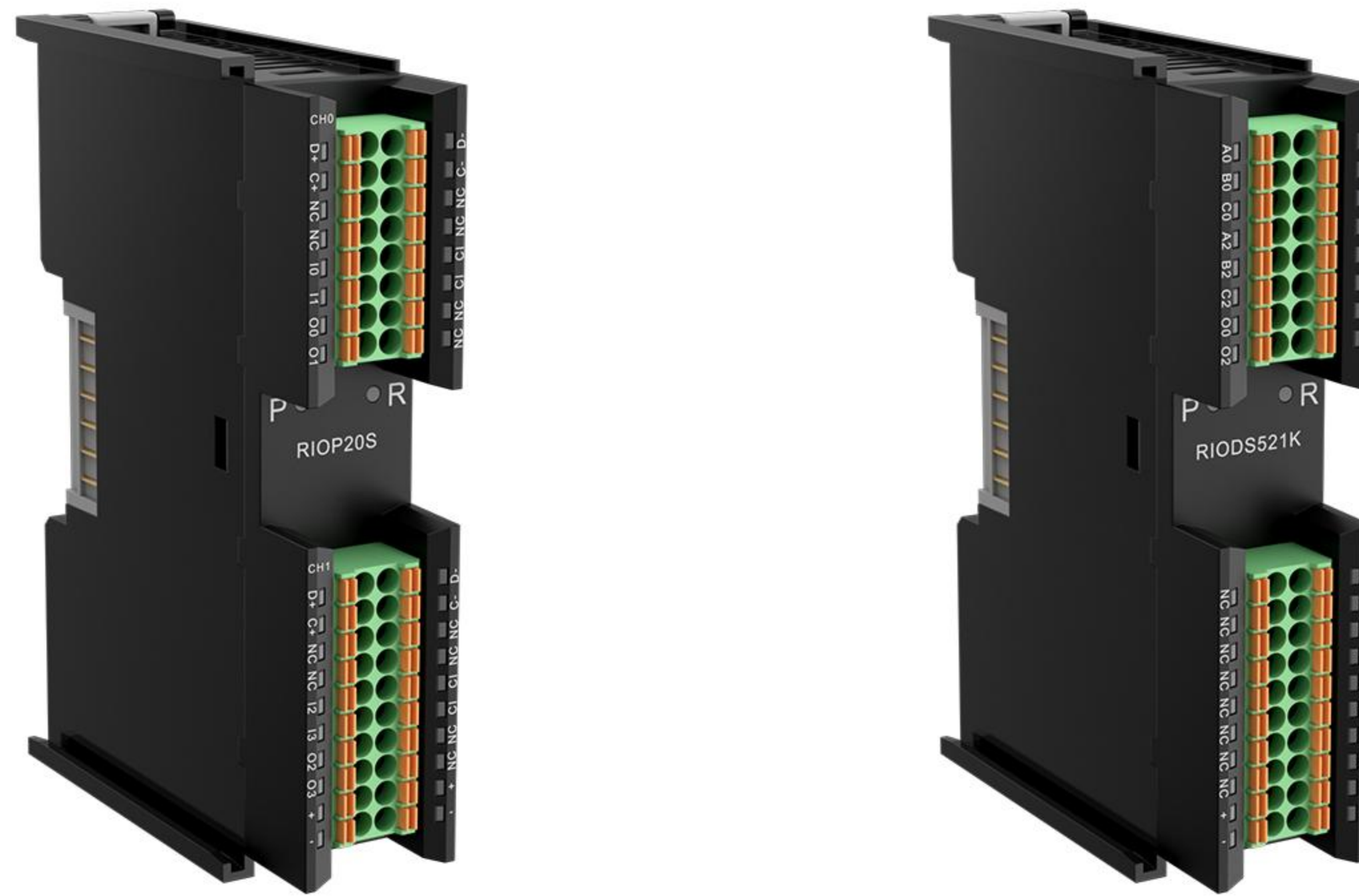
| Model     | Description   |
|-----------|---|
| RC-MT2200 | Modbus TCP Coupler kit (with power supply, end cover)             |
| RC-PN2200 | PROFINET Coupler kit (with power supply, end cover)               |
| RC-EC2200 | EtherCAT Coupler kit (with power supply, end cover)               |
| RC-EI2200 | EtherNet/IP Coupler kit (with power supply, end cover)            |
| RC-CL2200 | CC-Link Coupler kit (with power supply, end cover)                |
| RC-CB2200 | CC-Link IE Field Basic Coupler kit (with power supply, end cover) |
| RC-CT2200 | CC-Link IE TSN Coupler kit (with power supply, end cover)         |
| RC-PD2200 | PROFIBUS-DP Coupler kit (with power supply, end cover)            |
| RIOTMB    | End cover   |



| Model     | Description                                      |
|-----------|--|
| RIO3200D  | 32 DI, NPN&PNP, Connector type                   |
| RIO3200N  | 32 DI, NPN, European style terminal              |
| RIO3200P  | 32 DI, PNP, European style terminal              |
| RIO1600N  | 16 DI, NPN, European style terminal              |
| RIO1600P  | 16 DI, PNP, European style terminal              |
| RIO1616N  | 16 DI 16DO, NPN, 0.5A, European style terminal   |
| RIO1616P  | 16 DI, 16DO, PNP, 0.5A, European style terminal  |
| RIO1616PW | 16 DI, 16DO, PNP, 0.25A, European style terminal |
| RIO0800N  | 8 DI, NPN, European style terminal               |
| RIO0800P  | 8 DI, PNP, European style terminal               |
| RIO0032N  | 32 DO, NPN, 0.5A, European style terminal        |
| RIO0032ND | 32 DO, NPN, 0.1A, Connector type                 |
| RIO0032P  | 32 DO, PNP, 0.5A, European style terminal        |
| RIO0032PD | 32 DO, PNP, 0.1A, Connector type                 |
| RIO0032PW | 32 DO, PNP, 0.25A, European style terminal       |
| RIO0016N  | 16 DO, NPN, 0.5A, European style terminal        |
| RIO0016P  | 16 DO, PNP, 0.5A, European style terminal        |
| RIO0016PW | 16 DO, PNP, 0.25A, European style terminal       |
| RIO0008N  | 8 DO, NPN, 0.5A, European style terminal         |
| RIO0008P  | 8 DO, PNP, 0.5A, European style terminal         |
| RIO0008PW | 8 DO, PNP, 0.25A, European style terminal        |
| RIO0012J  | 12 DO, relay, 2A, European style terminal        |



| Model   | Description  |
|---------|--|
| RIO80AV | U, 8 channels analog voltage input, -10~+10V / 0~+10V, $\pm 0.1\%$ accuracy  |
| RIO40AV | U, 4 channels analog voltage input, -10~+10V / 0~+10V, $\pm 0.1\%$ accuracy  |
| RIO80AI | I, 8 channels analog current input, 0~20mA / 4~20mA, $\pm 0.1\%$ accuracy    |
| RIO40AI | I, 4 channels analog current input, 0~20mA / 4~20mA, $\pm 0.1\%$ accuracy    |
| RIO08AV | U, 8 channels analog voltage output, -10~+10V / 0~+10V, $\pm 0.1\%$ accuracy |
| RIO04AV | U, 4 channels analog voltage output, -10~+10V / 0~+10V, $\pm 0.1\%$ accuracy |
| RIO08AI | I, 8 channels analog current output, 0~20mA/4-20mA, $\pm 0.1\%$ accuracy     |
| RIO04AI | I, 4 channels analog current output, 0~20mA/4-20mA, $\pm 0.1\%$ accuracy     |
| RIO80TM | 8 channels RTD/TC  |
| RIO40TM | 4 channels RTD/TC  |



| Model     | Description   |
|-----------|---|
| RIOP04N   | 4-channel pulse output module, 24V, NPN type, 200kHz                          |
| RIOP20D   | 2-channel incremental encoder counter module, 5V, differential, 500kHz        |
| RIOP20S   | 2-channel SSI absolute encoder counter module, 5V, differential, 2MHz         |
| RIOS01C   | 1-channel RS485/RS232/RS422 3-in-1 serial communication interface             |
| RIO20SG   | 2-channel strained bridge measurement module                                  |
| RIODS521K | Two-phase hybrid open-loop single-axis stepper motor driver, 20-50V, 0.1~2.1A |
| RIOPWR2   | Extended Power Module 2A  |



| Model    | Description  |
|----------|--|
| IMT3200N | Modbus TCP, Integrated I/O, 32DI, NPN  |
| IMT3200P | Modbus TCP, Integrated I/O, 32DI, PNP  |
| IMT1600N | Modbus TCP, Integrated I/O, 16DI, NPN  |
| IMT1600P | Modbus TCP, Integrated I/O, 16DI, PNP  |
| IMT1616N | Modbus TCP, Integrated I/O, 16DI, 16DO, NPN, 0.5A  |
| IMT1616P | Modbus TCP, Integrated I/O, 16DI, 16DO, PNP, 0.5A  |
| IMT0808N | Modbus TCP, Integrated I/O, 8DI, 8DO, NPN, 0.5A  |
| IMT0808P | Modbus TCP, Integrated I/O, 8DI, 8DO, PNP  |
| IMT0032N | Modbus TCP, Integrated I/O, 32DO, NPN, 0.5A  |
| IMT0032P | Modbus TCP, Integrated I/O, 32 DO, PNP   |
| IMT0016N | Modbus TCP, Integrated I/O, 16DO, NPN, 0.5A  |
| IMT0016P | Modbus TCP, Integrated I/O, 16 DO, PNP   |
| IMT80AV  | Modbus TCP, Integrated I/O, U, 8 channels analog voltage input, support multiple ranges, maximum -10~+10V, $\pm 0.1\%$ accuracy  |
| IMT40AV  | Modbus TCP, Integrated I/O, U, 4 channels analog voltage input, support multiple ranges, maximum -10~+10V, $\pm 0.1\%$ accuracy  |
| IMT80AI  | Modbus TCP, Integrated I/O, I, 8 channels analog current input, 0~20mA / 4~20mA, $\pm 0.1\%$ accuracy                            |
| IMT40AI  | Modbus TCP, Integrated I/O, I, 4 channels analog current input, 0~20mA / 4~20mA, $\pm 0.1\%$ accuracy                            |
| IMT08AV  | Modbus TCP, Integrated I/O, I, 8 channels analog voltage output, support multiple ranges, maximum -10~+10V, $\pm 0.1\%$ accuracy |
| IMT04AV  | Modbus TCP, Integrated I/O, U, 4 channes analog voltage output, support multiple ranges, maximum -10~+10V, $\pm 0.1\%$ accuracy  |



| Model   | Description  |
|---------|--|
| IMT08AI | Modbus TCP, Integrated I/O, I, 8 channels analog current output, 0~20mA/4-20mA, $\pm 0.1\%$ accuracy |
| IMT04AI | Modbus TCP, Integrated I/O, I, 4 channels analog current output, 0~20mA/4-20mA, $\pm 0.1\%$ accuracy |



| Model    | Description   |
|----------|---|
| IPN3200N | PROFINET, Intergrated I/O, 32DI, NPN  |
| IPN3200P | PROFINET, Intergrated I/O, 32DI, PNP  |
| IPN1600N | PROFINET, Intergrated I/O, 16DI, NPN  |
| IPN1600P | PROFINET, Intergrated I/O, 16DI, PNP  |
| IPN1616N | PROFINET, Intergrated I/O, 16DI, 16DO, NPN, 0.5A  |
| IPN1616P | PROFINET, Intergrated I/O, 16DI, 16DO, PNP, 0.5A  |
| IPN1612J | PROFINET, Intergrated I/O, 16DI, 12DO, Relay, 2A  |
| IPN0808N | PROFINET, Intergrated I/O, 8DI, 8DO, NPN, 0.5A  |
| IPN0808P | PROFINET, Intergrated I/O, 8DI, 8DO, PNP, 0.5A  |
| IPN0032N | PROFINET, Intergrated I/O, 32DO, NPN, 0.5A  |
| IPN0032P | PROFINET, Intergrated I/O, 32DO, PNP, 0.5A  |
| IPN0016N | PROFINET, Intergrated I/O, 16DO, NPN, 0.5A  |
| IPN0016P | PROFINET, Intergrated I/O, 16DO, PNP, 0.5A  |
| IPN0012J | PROFINET, Intergrated I/O, 12DO, Relay, 2A  |
| IPN80AV  | PROFINET, Intergrated I/O, U, 8 channels analog voltage input, support multiple ranges, maximum -10~+10V, $\pm 0.1\%$ accuracy  |
| IPN40AV  | PROFINET, Intergrated I/O, U, 4 channels analog voltage input, support multiple ranges, maximum -10~+10V, $\pm 0.1\%$ accuracy  |
| IPN80AI  | PROFINET, Intergrated I/O, I, 8 channels analog current input, 0~20mA / 4~20mA, $\pm 0.1\%$ accuracy                            |
| IPN40AI  | PROFINET, Intergrated I/O, I, 4 channels analog current input, 0~20mA / 4~20mA, $\pm 0.1\%$ accuracy                            |
| IPN08AV  | PROFINET, Intergrated I/O, U, 8 channels analog voltage output, support multiple ranges, maximum -10~+10V, $\pm 0.1\%$ accuracy |



| Model   | Description   |
|---------|---|
| IPN04AV | PROFINET, Intergrated I/O, U, 4 channels analog voltage output, support multiple ranges, maximum -10~+10V, $\pm 0.1\%$ accuracy |
| IPN08AI | PROFINET, Intergrated I/O, I, 8 channels analog current output, 0~20mA/4-20mA, $\pm 0.1\%$ accuracy                             |
| IPN04AI | PROFINET, Intergrated I/O, I, 4 channels analog current output, 0~20mA/4-20mA, $\pm 0.1\%$ accuracy                             |

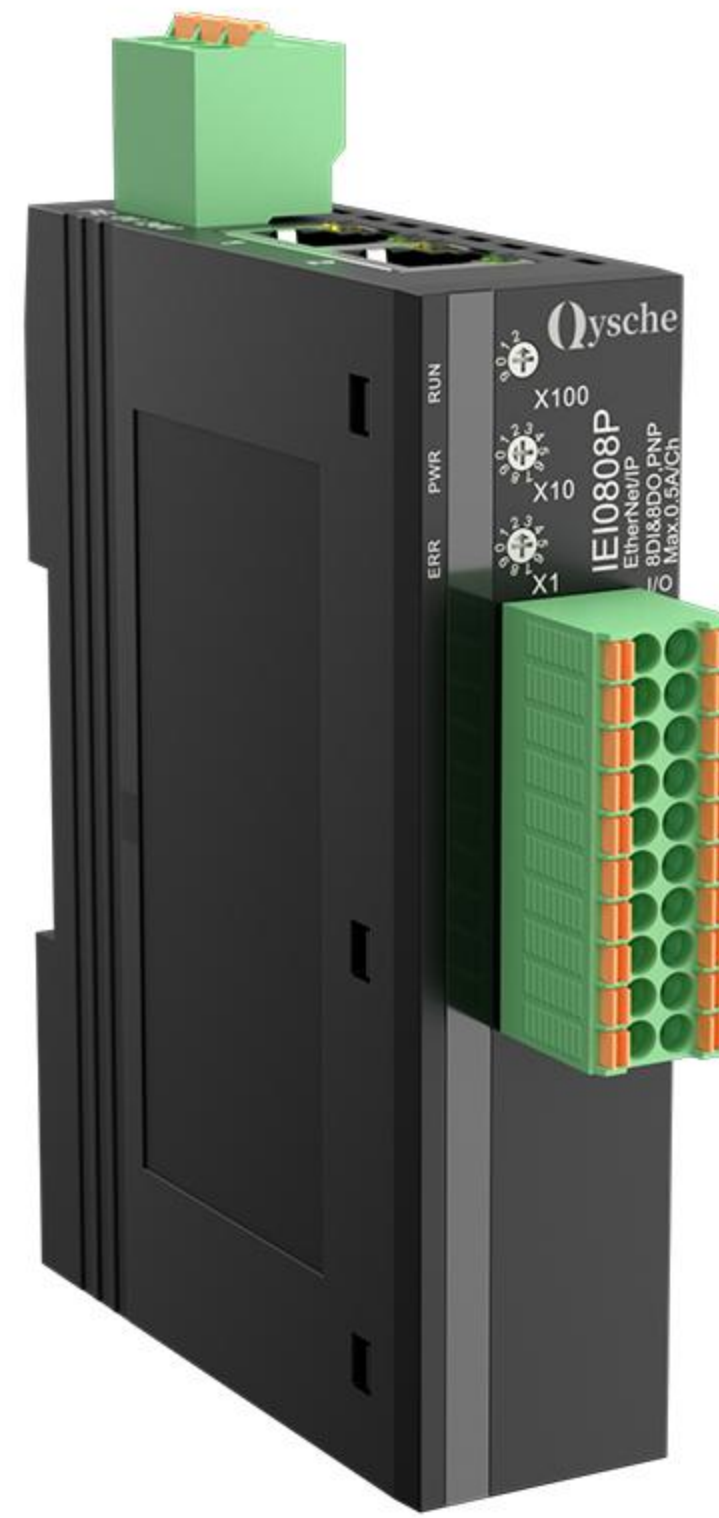




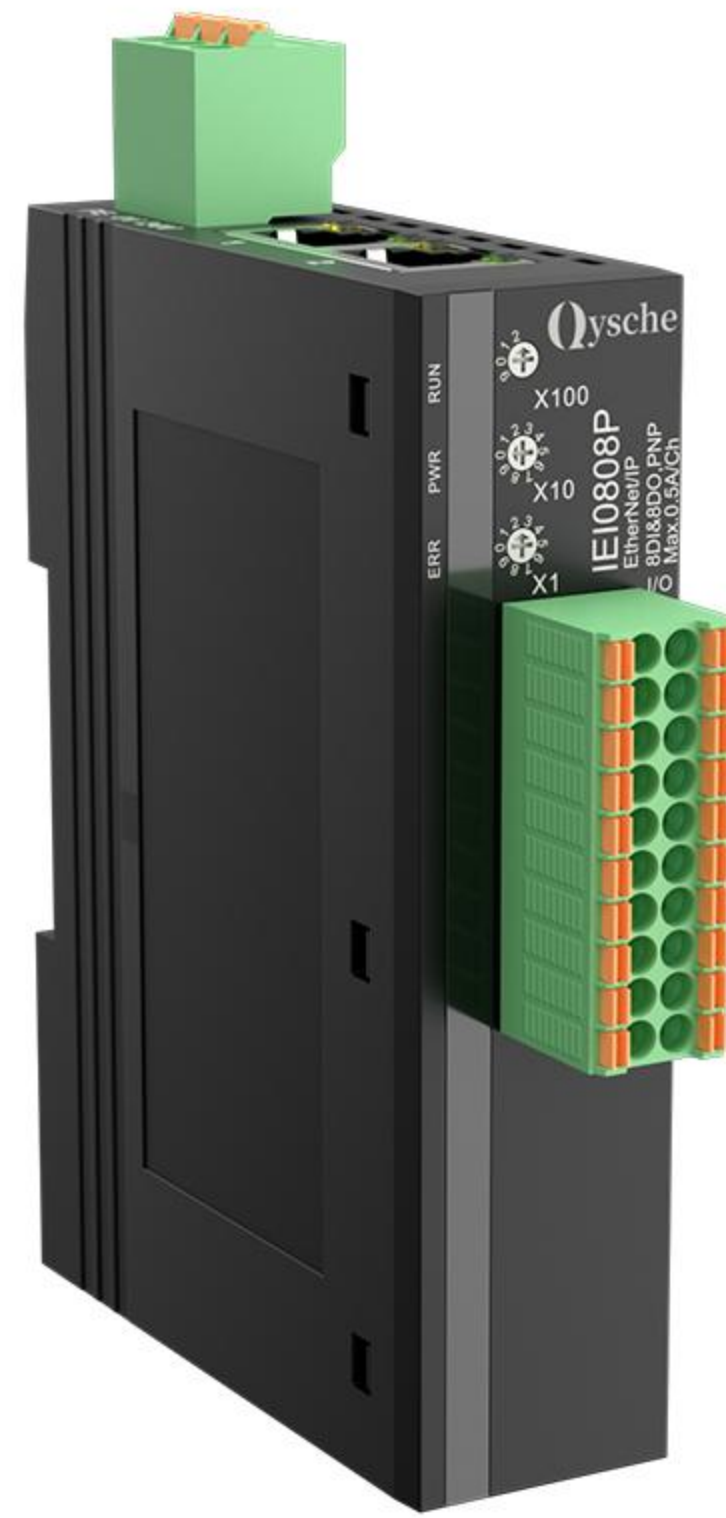
| Model    | Description   |
|----------|---|
| IEC3200N | EtherCAT, Intergrated I/O, 32DI, NPN  |
| IEC3200P | EtherCAT, Intergrated I/O, 32DI, PNP  |
| IEC1600N | EtherCAT, Intergrated I/O, 16DI, NPN  |
| IEC1600P | EtherCAT, Intergrated I/O, 16DI, PNP  |
| IEC1616N | EtherCAT, Intergrated I/O, 16DI, 16DO, NPN, 0.5A  |
| IEC1616P | EtherCAT, Intergrated I/O, 16DI, 16DO, PNP, 0.5A  |
| IEC0808N | EtherCAT, Intergrated I/O, 8DI, 8DO, NPN, 0.5A  |
| IEC0808P | EtherCAT, Intergrated I/O, 8DI, 8DO, PNP, 0.5A  |
| IEC0032N | EtherCAT, Intergrated I/O, 32DO, NPN, 0.5A  |
| IEC0032P | EtherCAT, Intergrated I/O, 32DO, PNP, 0.5A  |
| IEC0016N | EtherCAT, Intergrated I/O, 16DO, NPN, 0.5A  |
| IEC0016P | EtherCAT, Intergrated I/O, 16DO, PNP, 0.5A  |
| IEC0012J | EtherCAT, Intergrated I/O, 12DO, Relay, 2A  |
| IEC80AV  | EtherCAT, Intergrated I/O, U, 8 channels analog voltage input, -10~+10V / 0~+10V, $\pm 0.1\%$ accuracy  |
| IEC40AV  | EtherCAT, Intergrated I/O, U, 4 channels analog voltage input, -10~+10V / 0~+10V, $\pm 0.1\%$ accuracy  |
| IEC80AI  | EtherCAT, Intergrated I/O, I, 8 channels analog current input, 0~20mA / 4~20mA, $\pm 0.1\%$ accuracy    |
| IEC40AI  | EtherCAT, Intergrated I/O, I, 4 channels analog current input, 0~20mA / 4~20mA, $\pm 0.1\%$ accuracy    |
| IEC08AV  | EtherCAT, Intergrated I/O, U, 8 channels analog voltage output, -10~+10V / 0~+10V, $\pm 0.1\%$ accuracy |



| Model   | Description   |
|---------|---|
| IEC04AV | EtherCAT, Intergrated I/O, U, 4 channels analog voltage output, -10~+10V / 0~+10V, $\pm 0.1\%$ accuracy |
| IEC08AI | EtherCAT, Intergrated I/O, I, 8 channels analog current output, 0~20mA/4-20mA, $\pm 0.1\%$ accuracy     |
| IEC04AI | EtherCAT, Intergrated I/O, I, 4 channels analog current output, 0~20mA/4-20mA, $\pm 0.1\%$ accuracy     |



| Model    | Description  |
|----------|--|
| IEI3200N | EtherNet/IP, Intergrated I/O, 32DI, NPN  |
| IEI3200P | EtherNet/IP, Intergrated I/O, 32DI, PNP  |
| IEI1600N | EtherNet/IP, Intergrated I/O, 16DI, NPN  |
| IEI1600P | EtherNet/IP, Intergrated I/O, 16DI, PNP  |
| IEI1616N | EtherNet/IP, Intergrated I/O, 16DI, 16DO, NPN, 0.5A  |
| IEI1616P | EtherNet/IP, Intergrated I/O, 16DI, 16DO, PNP, 0.5A  |
| IEI0808N | EtherNet/IP, Intergrated I/O, 8DI, 8DO, NPN, 0.5A  |
| IEI0808P | EtherNet/IP, Intergrated I/O, 8DI, 8DO, PNP, 0.5A  |
| IEI0032N | EtherNet/IP, Intergrated I/O, 32DO, NPN, 0.5A  |
| IEI0032P | EtherNet/IP, Intergrated I/O, 32DO, PNP, 0.5A  |
| IEI0016N | EtherNet/IP, Intergrated I/O, 16DO, NPN, 0.5A  |
| IEI0016P | EtherNet/IP, Intergrated I/O, 16DO, PNP, 0.5A  |
| IEI0012J | EtherNet/IP, Intergrated I/O, 12DO, Relay, 2A  |
| IEI80AV  | EtherNet/IP, Intergrated I/O, U, 8 channels analog voltage input, support multiple ranges, maximum -10~+10V, $\pm 0.1\%$ accuracy  |
| IEI40AV  | EtherNet/IP, Intergrated I/O, U, 4 channels analog voltage input, support multiple ranges, maximum -10~+10V, $\pm 0.1\%$ accuracy  |
| IEI80AI  | EtherNet/IP, Intergrated I/O, I, 8 channels analog current input, 0~20mA / 4~20mA, $\pm 0.1\%$ accuracy                            |
| IEI40AI  | EtherNet/IP, Intergrated I/O, I, 4 channels analog current input, 0~20mA / 4~20mA, $\pm 0.1\%$ accuracy                            |
| IEI08AV  | EtherNet/IP, Intergrated I/O, U, 8 channels analog voltage output, support multiple ranges, maximum -10~+10V, $\pm 0.1\%$ accuracy |



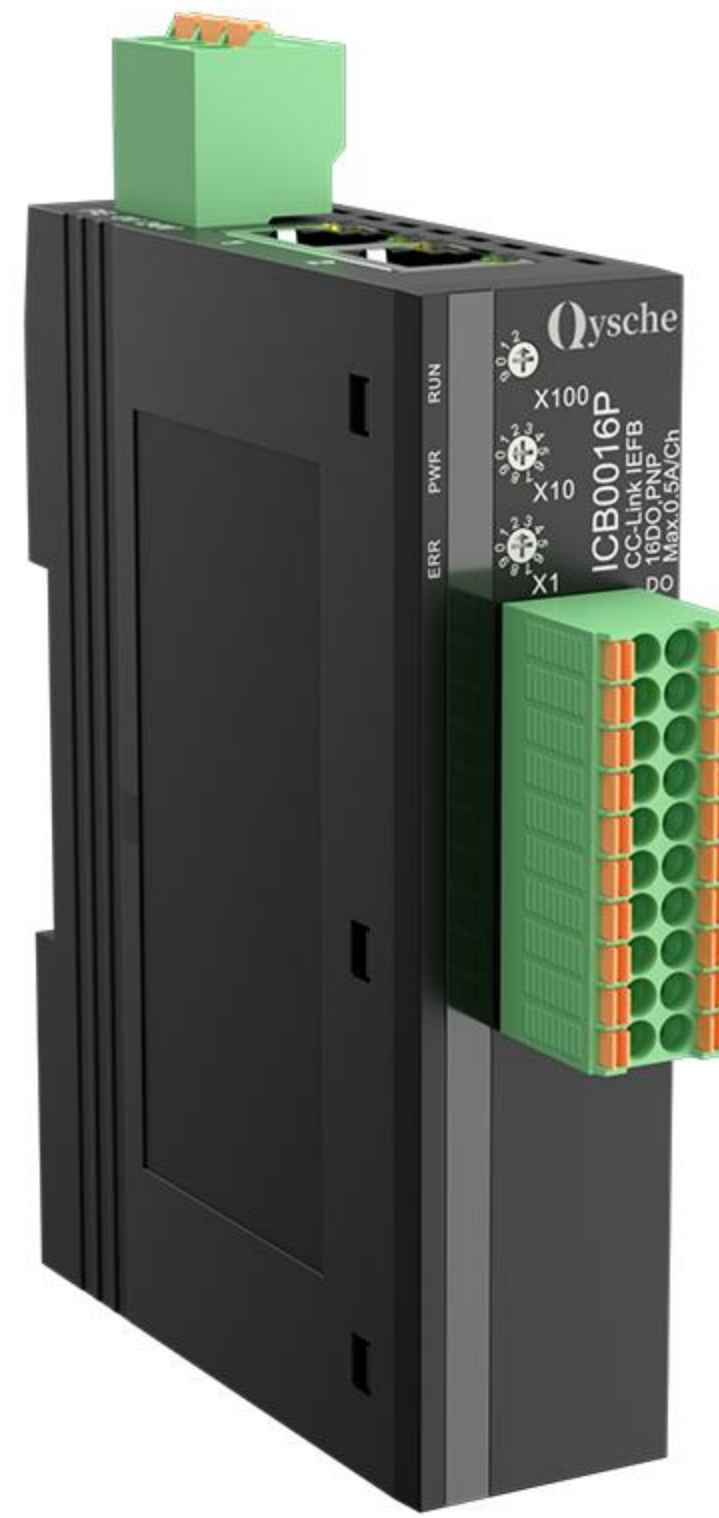
| Model   | Description  |
|---------|--|
| IEI04AV | EtherNet/IP, Intergrated I/O, U, 4 channels analog voltage output, support multiple ranges, maximum -10~+10V, $\pm 0.1\%$ accuracy |
| IEI08AI | EtherNet/IP, Intergrated I/O, I, 8 channels analog current output, 0~20mA/4-20mA, $\pm 0.1\%$ accuracy                             |
| IEI04AI | EtherNet/IP, Intergrated I/O, I, 4 channels analog current output, 0~20mA/4-20mA, $\pm 0.1\%$ accuracy                             |



| Model    | Description   |
|----------|---|
| ICC3200N | CC-Link, Intergrated I/O, 32DI, NPN   |
| ICC3200P | CC-Link, Intergrated I/O, 8DI, 8DO, NPN, 0.5A   |
| ICC1600N | CC-Link, Intergrated I/O, 16DI, NPN   |
| ICC1600P | CC-Link, Intergrated I/O, 16 DI, PNP  |
| ICC1616N | CC-Link, Intergrated I/O, 16DI, 16DO, NPN, 0.5A   |
| ICC1616P | CC-Link, Intergrated I/O, 16DI, 16DO, PNP, 0.5A   |
| ICC0808N | CC-Link, Intergrated I/O, 8DI, 8DO, NPN, 0.5A   |
| ICC0808P | CC-Link, Intergrated I/O, 8DI, 8DO, PNP, 0.5A   |
| ICC0032N | CC-Link, Intergrated I/O, 32DO, NPN, 0.5A   |
| ICC0032P | CC-Link, Intergrated I/O, 32 DO, PNP, 0.5A  |
| ICC0016N | CC-Link, Intergrated I/O, 16DO, NPN, 0.5A   |
| ICC0016P | CC-Link, Intergrated I/O, 16 DO, PNP, 0.5A  |
| ICC80AV  | CC-Link, Intergrated I/O, U, 8 channels analog voltage input, -10~+10V / 0~+5V / 1~+5V, $\pm 0.1\%$ accuracy  |
| ICC40AV  | CC-Link, Intergrated I/O, U, 4 channels analog voltage input, -10~+10V / 0~+5V / 1~+5V, $\pm 0.1\%$ accuracy  |
| ICC80AI  | CC-Link, Intergrated I/O, I, 8 channels analog current input, 0~20mA / 4~20mA, $\pm 0.1\%$ accuracy           |
| ICC40AI  | CC-Link, Intergrated I/O, I, 4 channels analog current input, 0~20mA / 4~20mA, $\pm 0.1\%$ accuracy           |
| ICC08AV  | CC-Link, Intergrated I/O, I, 4 channels analog current output, 0~20mA/4-20mA, $\pm 0.1\%$ accuracy            |
| ICC04AV  | CC-Link, Intergrated I/O, U, 4 channels analog voltage output, -10~+10V / 0~+5V / 1~+5V, $\pm 0.1\%$ accuracy |



| Model   | Description  |
|---------|--|
| ICC08AI | CC-Link, Intergrated I/O, I, 8 channels analog current output, 0~20mA/4-20mA, $\pm 0.1\%$ accuracy |
| ICC04AI | CC-Link, Intergrated I/O, I, 4 channels analog current output, 0~20mA/4-20mA, $\pm 0.1\%$ accuracy |



| Model    | Description  |
|----------|--|
| ICB3200N | CC-Link IE Field Basic, Integrated I/O, 32DI, NPN  |
| ICB3200P | CC-Link IE Field Basic, Integrated I/O, 32DI, PNP  |
| ICB1600N | CC-Link IE Field Basic, Integrated I/O, 16DI, NPN  |
| ICB1600P | CC-Link IE Field Basic, Integrated I/O, 16DI, PNP  |
| ICB1616N | CC-Link IE Field Basic, Integrated I/O, 16DI, 16DO, NPN, 0.5A  |
| ICB1616P | CC-Link IE Field Basic, Integrated I/O, 16DI, 16DO, PNP  |
| ICB0808N | CC-Link IE Field Basic, Integrated I/O, 8DI, 8DO, NPN, 0.5A  |
| ICB0808P | CC-Link IE Field Basic, Integrated I/O, 8 DI, 8DO, PNP   |
| ICB0032N | CC-Link IE Field Basic, Integrated I/O, 32DO, NPN, 0.5A  |
| ICB0032P | CC-Link IE Field Basic, Integrated I/O, 32 DO, PNP   |
| ICB0016N | CC-Link IE Field Basic, Integrated I/O, 16DO, NPN, 0.5A  |
| ICB0016P | CC-Link IE Field Basic, Integrated I/O, 16 DO, PNP   |
| ICB0012J | CC-Link IE Field Basic, Integrated I/O, 12-channel relay output  |
| ICB80AV  | CC-Link IE Field Basic, Integrated I/O, U, 8 channels analog voltage input, -10~+10V / 0~+10V, $\pm 0.1\%$ accuracy  |
| ICB40AV  | CC-Link IE Field Basic, Integrated I/O, U, 4 channels analog voltage input, -10~+10V / 0~+10V, $\pm 0.1\%$ accuracy  |
| ICB80AI  | CC-Link IE Field Basic, Integrated I/O, I, 8 channels analog current input, 0~20mA / 4~20mA, $\pm 0.1\%$ accuracy    |
| ICB40AI  | CC-Link IE Field Basic, Integrated I/O, I, 4 channels analog current input, 0~20mA / 4~20mA, $\pm 0.1\%$ accuracy    |
| ICB08AV  | CC-Link IE Field Basic, Integrated I/O, U, 8 channels analog voltage output, -10~+10V / 0~+10V, $\pm 0.1\%$ accuracy |



| Model   | Description  |
|---------|--|
| ICB04AV | CC-Link IE Field Basic, Integrated I/O, U, 4 channels analog voltage output, -10~+10V / 0~+10V, $\pm 0.1\%$ accuracy |
| ICB08AI | CC-Link IE Field Basic, Integrated I/O, I, channels analog current output, 0~20mA/4-20mA, $\pm 0.1\%$ accuracy       |
| ICB04AI | CC-Link IE Field Basic, Integrated I/O, I, 4 channels analog current output, 0~20mA/4-20mA, $\pm 0.1\%$ accuracy     |





| Model    | Description                                      |
|----------|--|
| IDN3200N | DeviceNet, Integrated I/O, 32DI, NPN             |
| IDN3200P | DeviceNet, Integrated I/O, 32DI, PNP             |
| IDN1616N | DeviceNet, Integrated I/O, 16DI, 16DO, NPN, 0.5A |
| IDN1616P | DeviceNet, Integrated I/O, 16DI, 16DO, PNP       |
| IDN1600N | DeviceNet, Integrated I/O, 16DI, NPN             |
| IDN1600P | DeviceNet, Integrated I/O, 16DI, PNP             |
| IDN0808N | DeviceNet, Integrated I/O, 8DI, 8DO, NPN, 0.5A   |
| IDN0808P | DeviceNet, Integrated I/O, 8DI, 8DO, PNP         |
| IDN0032N | DeviceNet, Integrated I/O, 32DO, NPN, 0.5A       |
| IDN0032P | DeviceNet, Integrated I/O, 32DO, PNP             |
| IDN0016N | DeviceNet, Integrated I/O, 16DO, NPN, 0.5A       |
| IDN0016P | DeviceNet, Integrated I/O, 16DO, PNP             |



| Model    | Description   |
|----------|---|
| IPN2FP   | PROFINET to Free port protocol  |
| IPN2MR   | PROFINET to Modbus RTU protocol                                       |
| IECSP04D | CiA402 4-axis pulse output module, 5V-differential, 400kHz            |
| IECP20D  | 2-channel incremental encoder counter module, 5V-differential, 500kHz |